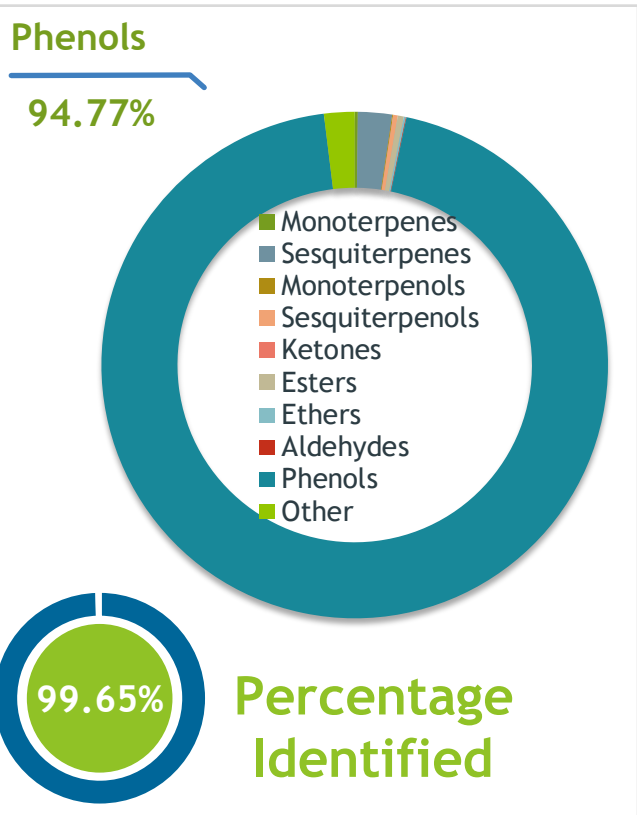


Client  **Source** 

Cassia Oil (*Cinnamomum cassia*)
150

Sample Cassia Oil (*Cinnamomum cassia*)
Batch #:..... | 150
Type:..... | Essential Oil
CAS Number:... | 8007-80-5
Virginia Aromas



Client  **Website**

Primary **89.17%** | (E)-Cinnamaldehyde
1.60% | Coumarin
1.45% | Benzaldehyde

Result 

Conclusion No adulterants, diluents, or contaminants were detected via this method. This oil meets the expected profile for genuine Essential Oil of Cassia Oil (*Cinnamomum cassia*)
Internal Number: | EVS-5792


Essential Validation Services
747 SW 2nd Ave IMB 12 Suite 306
Gainesville, FL 32601
317.361.5044 |
<https://essentialvalidationservices.com/>


Monoterpenes	0.20%
Sesquiterpenes	2.17%
Monoterpenols	0.06%
Sesquiterpenols	0.30%
Ketones	0.00%
Esters	0.38%
Ethers	0.13%
Aldehydes	0.04%
Phenols	94.77%
Other	1.95%

ESSENTIAL VALIDATION SERVICES | 747 SW 2ND AVE GAINESVILLE, FLORIDA 32601 | 317-361-5044

Client



Source

Cassia Oil (*Cinnamomum cassia*)

150

Total Percentage		99.65%		
Number	RT	Area %	Compound Name	Chemical Family
1	6.88	0.22%	Styrene	Phenylpropanoid
2	8.36	0.12%	alpha-Pinene	Monoterpene
3	8.98	0.04%	Camphene	Monoterpene
4	9.47	1.45%	Benzaldehyde	Simple Phenolic
5	10.09	0.02%	beta-Pinene	Monoterpene
6	12.33	0.02%	Limonene	Monoterpene
7	12.44	0.02%	1,8-Cineole	Monoterpene Ether
8	12.95	0.52%	Salicylaldehyde	Simple Phenolic
9	13.96	0.03%	Acetophenone	Simple Phenolic
10	15.60	0.02%	Linalool	Monoterpenol
11	16.07	0.60%	2-Phenylethanol	Simple Phenolic
12	17.45	0.06%	2-Methylbenzofuran	Phenylpropanoid
13	18.36	1.20%	Hydrocinnamaldehyde	Phenylpropanoid
14	18.80	0.04%	Borneol	Monoterpenol
15	18.87	0.04%	3-Methylbenzofuran	Phenylpropanoid
16	20.93	0.70%	(Z)-Cinnamaldehyde	Phenylpropanoid
17	21.53	0.13%	Hydrocinnamyl alcohol	Phenylpropanoid
18	21.86	0.07%	ortho-Anisaldehyde	Simple Phenolic
19	23.71	89.17%	(E)-Cinnamaldehyde	Phenylpropanoid
20	24.94	0.05%	Cinnamyl alcohol	Phenylpropanoid
21	26.88	0.04%	Eugenol	Phenylpropanoid
22	27.83	0.44%	alpha-Copaene	Sesquiterpene
23	28.15	0.01%	beta-Bourbonene	Sesquiterpene
24	28.46	0.02%	beta-Elementene	Sesquiterpene
25	29.46	0.03%	cis-alpha-Bergamotene	Sesquiterpene
26	29.62	0.18%	beta-Caryophyllene	Sesquiterpene
27	30.06	0.03%	beta-Copaene	Sesquiterpene
28	30.20	1.60%	Coumarin	Coumarin
29	30.40	0.10%	Aromadendrene	Sesquiterpene
30	30.78	0.38%	(E)-Cinnamyl acetate	Phenylpropanoid Ester
31	31.08	0.03%	alpha-Humulene	Sesquiterpene
32	31.15	0.05%	(E)-beta-Farnesene	Sesquiterpene
33	31.27	0.13%	allo-Aromadendrene	Sesquiterpene
34	31.94	0.17%	gamma-Murolene	Sesquiterpene
35	32.11	0.05%	alpha-Amorphene	Sesquiterpene

